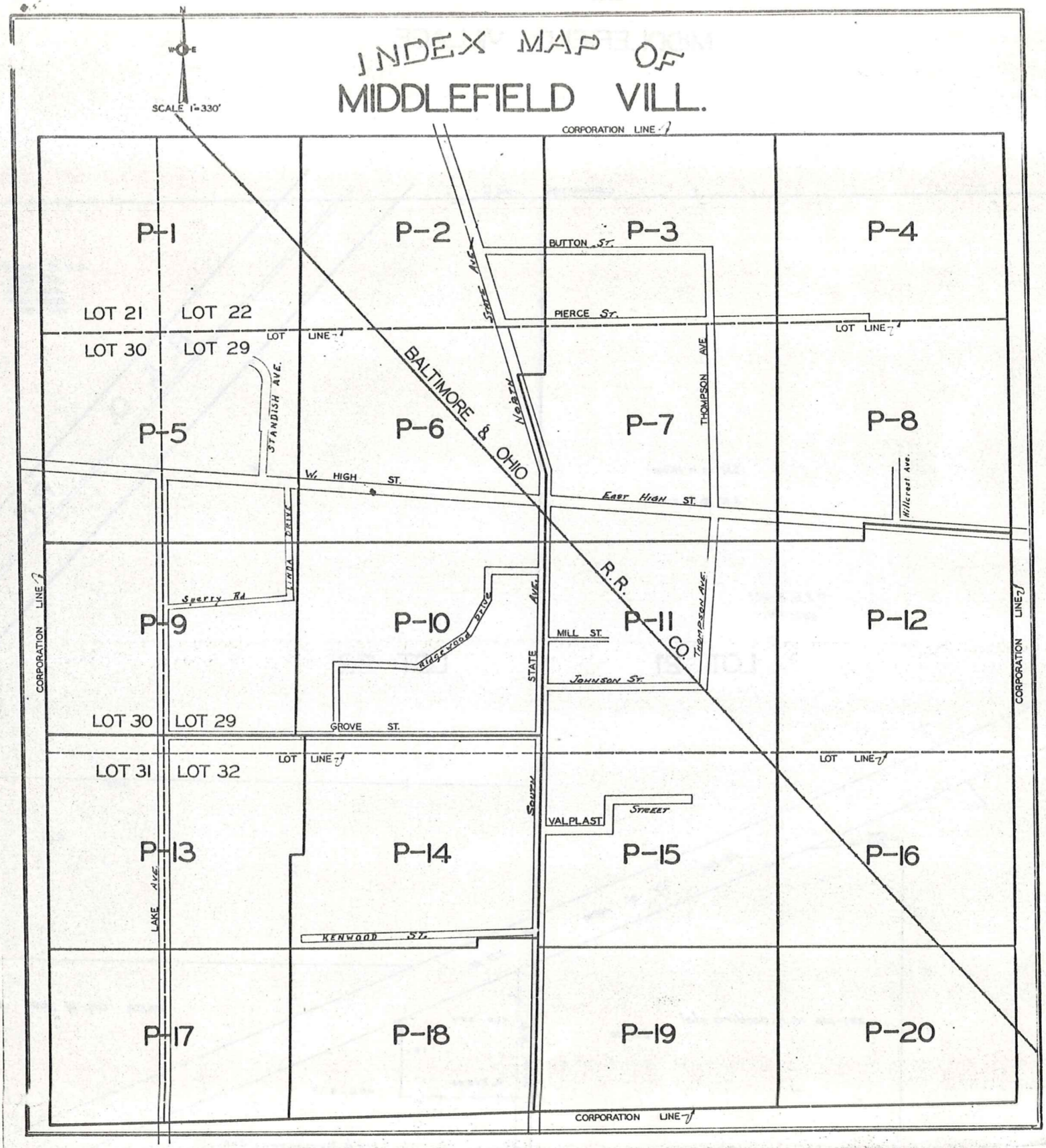
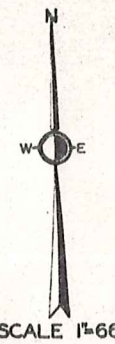
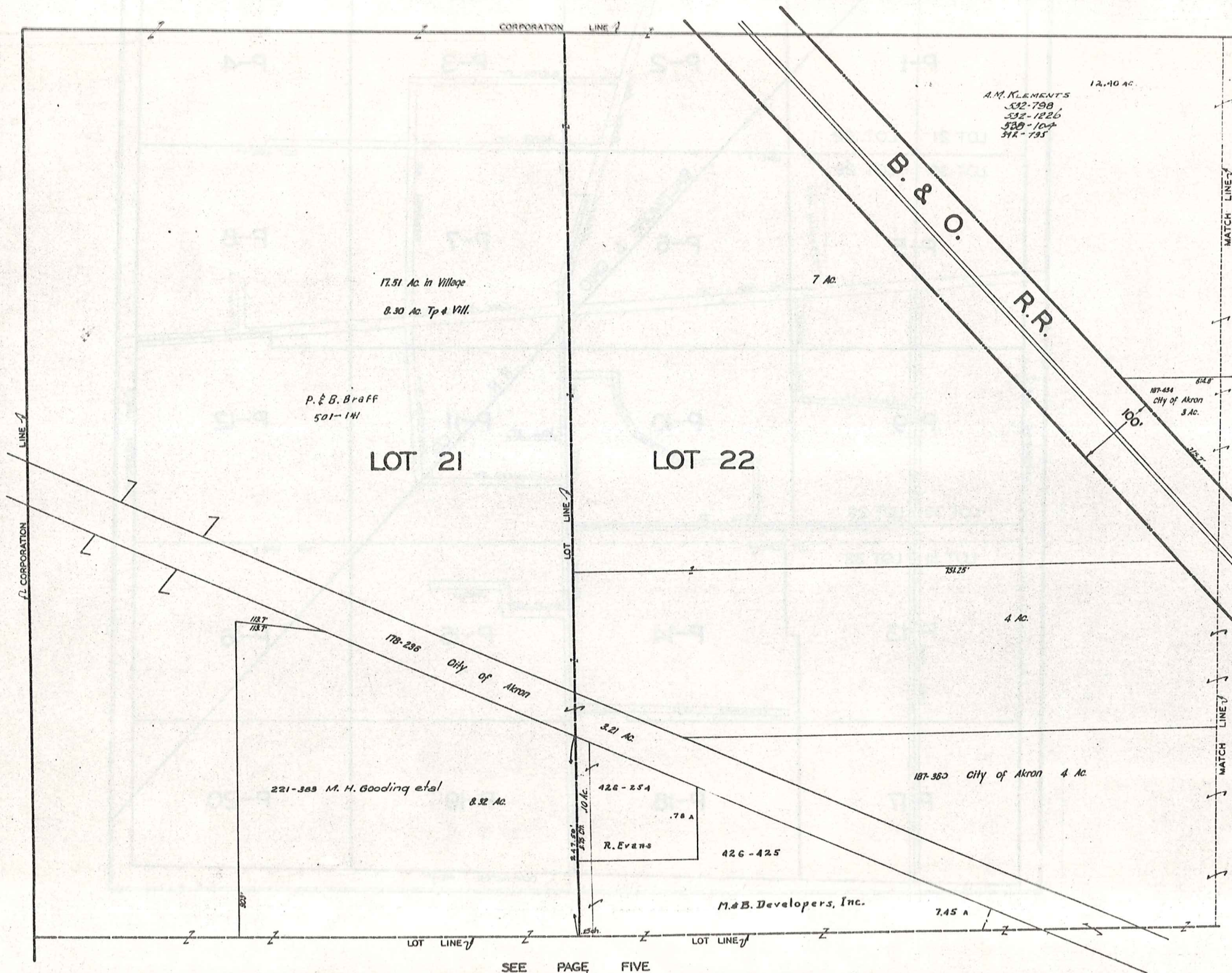


INDEX MAP OF MIDDLEFIELD VILL.

SCALE 1"=330'



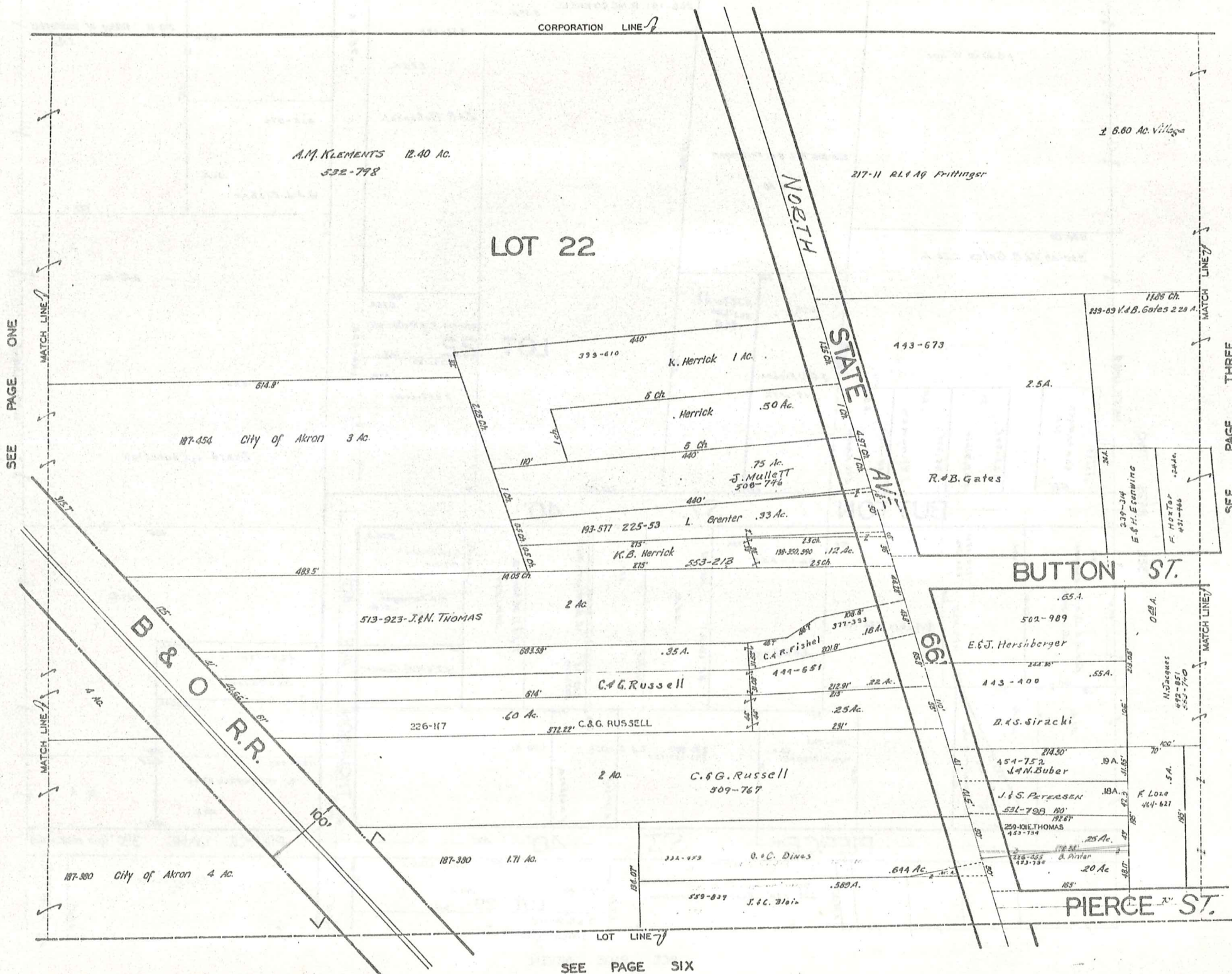


SCALE 1"=66'

JAN. 1, 1974

SEE PAGE TWO

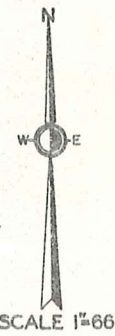
SEE PAGE FIVE



SEE PAGE ONE

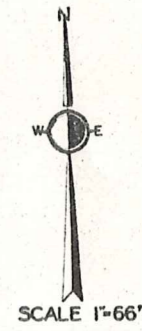
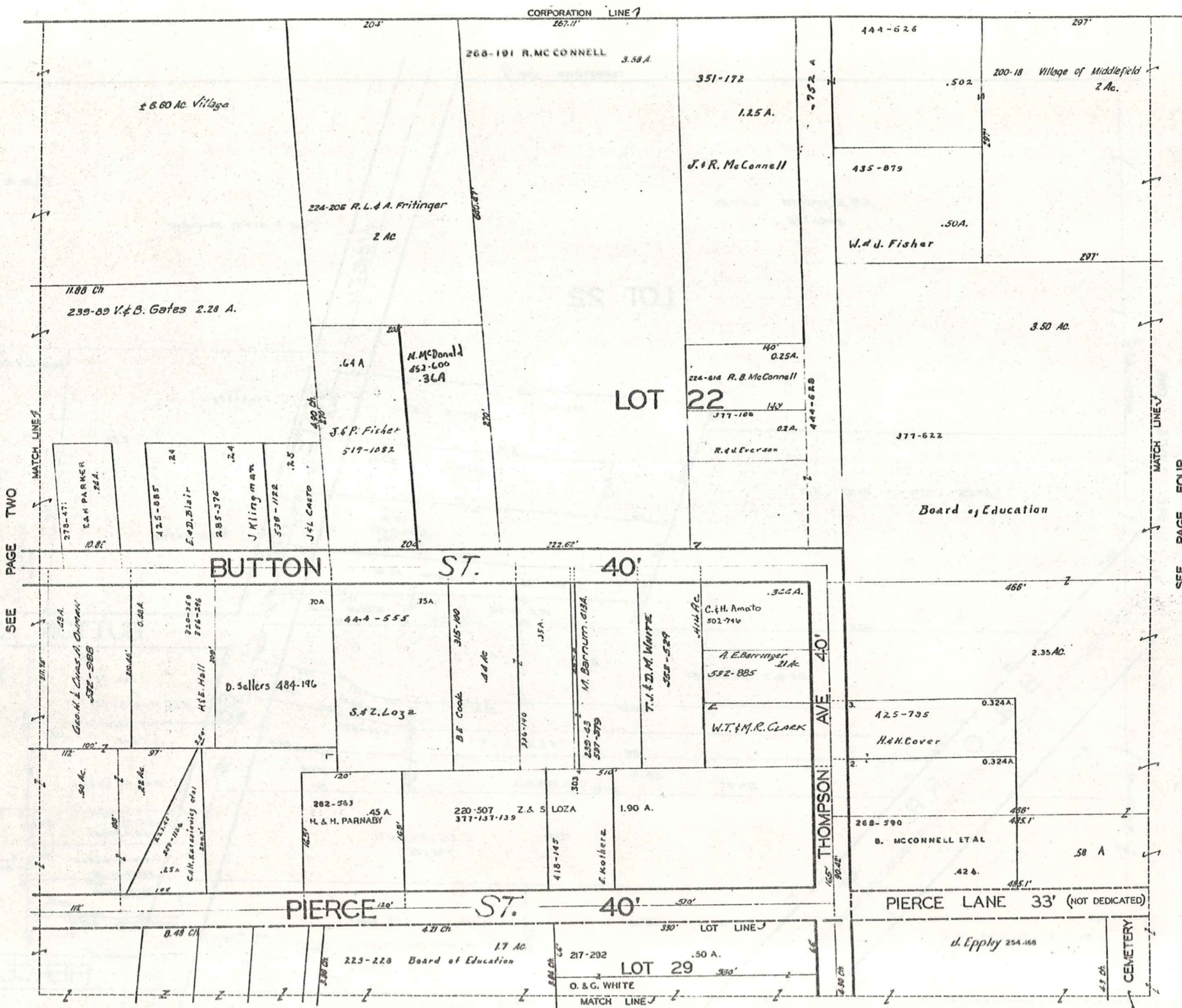
SEE PAGE THREE

SEE PAGE SIX



SCALE 1"=66'

JAN 1, 1974



SCALE 1"=66'

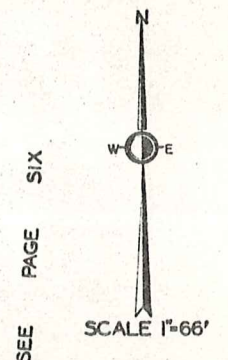
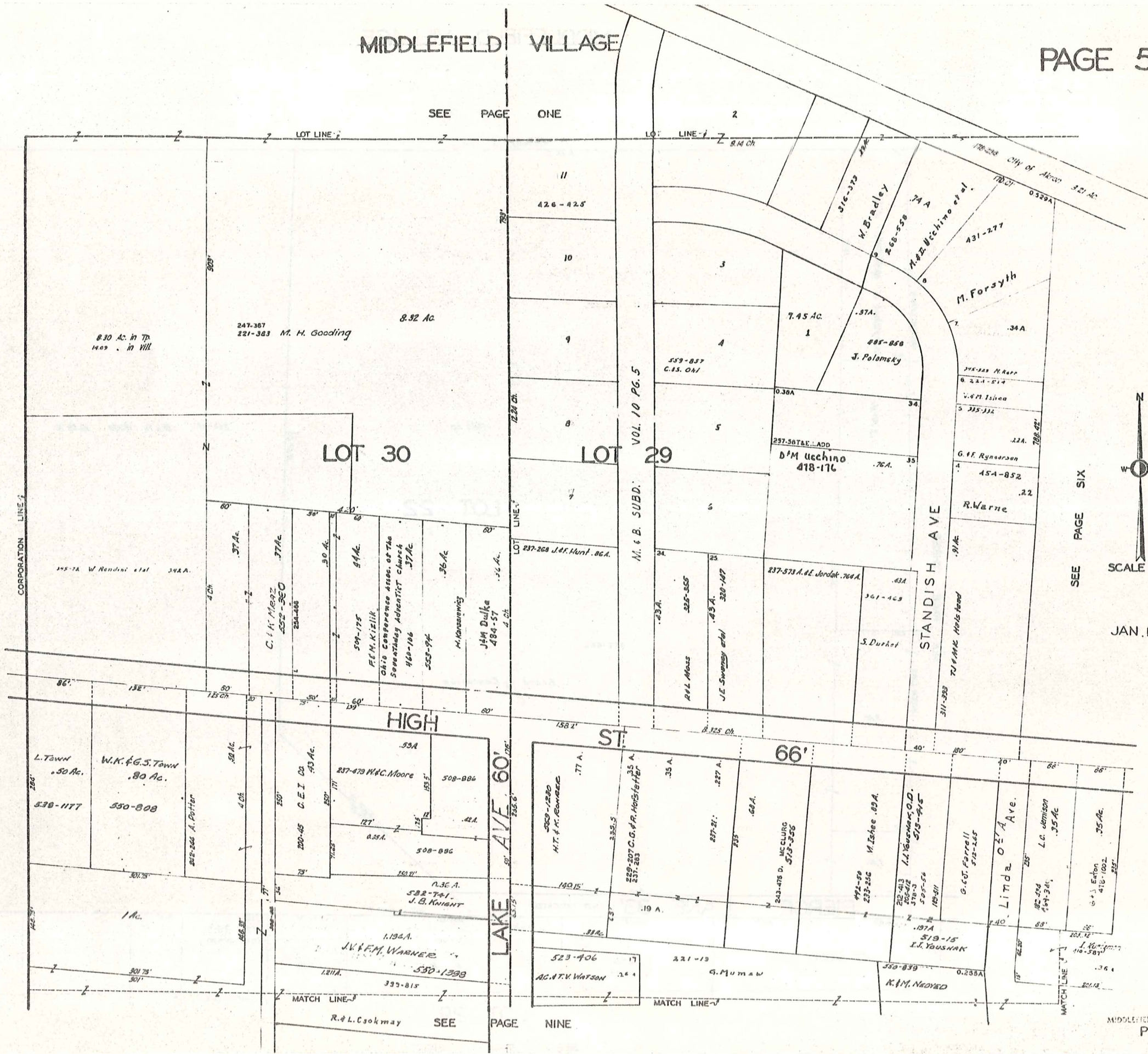
JAN 1, 1978

SEE PAGE TWO

SEE PAGE FOUR

SEE PAGE SEVEN

SEE PAGE ONE



SEE PAGE SIX

JAN. 1, 1974

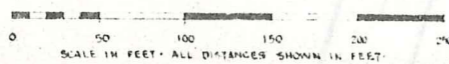
PAGE 4

SEE PAGE NINE

PLAT OF
M. & B. SUBDIVISION
IN
LOT NO. 22 & LOT NO. 29
MIDDLEFIELD VILLAGE
GEAUGA COUNTY OHIO

SCALE: 1 IN. = 50 FT.

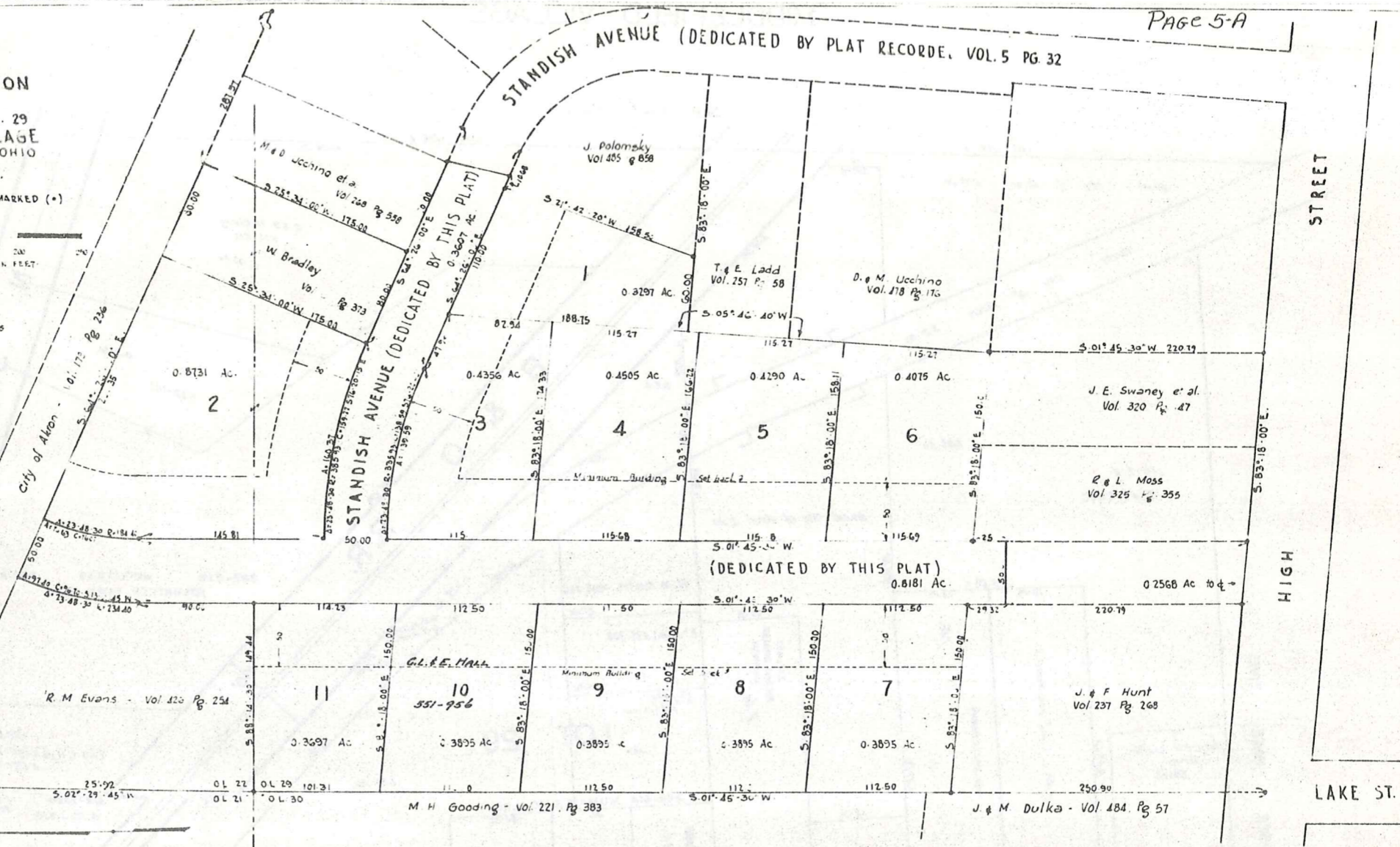
IRON MONUMENTS LOCATED AT POINTS MARKED (*)



I hereby certify that this plat is a true and correct representation of the premises shown and was made by me at the instance of M. & B. Developers, Inc.

T. R. Root Registered Surveyor 2888
Chardon Ohio, June 5, 1972

Total area of sub-lots 4.853 Ac
Total area of dedicated streets 1.1789 Ac
Total length of dedicated streets 1079.5 Ft.



M. & B. DEVELOPERS, INC., an Ohio corporation, owner of all the land proposed for subdivision shown hereon, claiming title by or through instrument recorded in volume 126, page 125, of Geauga County records of deeds hereby accepts and excepts this plat and certifies that the same was prepared at its order and request. Said Corporation hereby dedicates to public use for highway purposes the area within the boundaries of Standish Avenue as the same are shown, and certifies that said area is free of all encumbrances. Said Corporation now requests acceptance of this Dedication and Subdivision by Middlefield Village, and that this Plat then be placed upon the records of Geauga County.

In witness whereof said Corporation sets its hand and Corporate seal at Ohio this _____ day of January, 1973
M. & B. DEVELOPERS, INC.
Witness _____ by _____ its _____
Witness _____ by _____ its _____

State of Ohio ss
Gauga County ss Before me a Notary Public in and for ss a County and State, personally appeared the above named M. & B. Developers, Inc. by _____ its _____ and _____ its _____ who acknowledged that they did sign the foregoing instrument, and that the same is the free act and deed of said Corporation and the free act and deed of each of them personally and as such officers. In testimony whereof I have hereunto set my hand and official seal at this _____ day of January, 1973

Notary Public

FOR MIDDLEFIELD VILLAGE
Acceptance recommended _____
Date _____ for _____
Acceptance recommended *Terence A. Jack, P.E.*
Date *Jan. 26, 1973* for *Village Engineer*
Acceptance recommended _____
Date _____ for _____

The subdivision of land as shown on this Plat is accepted on behalf of Middlefield Village, and the land dedicated to public use is hereby accepted as such for said Village.

Mayor _____
Council President _____
Approved _____ Clerk _____
by Ord. #481 adopted _____ 1972

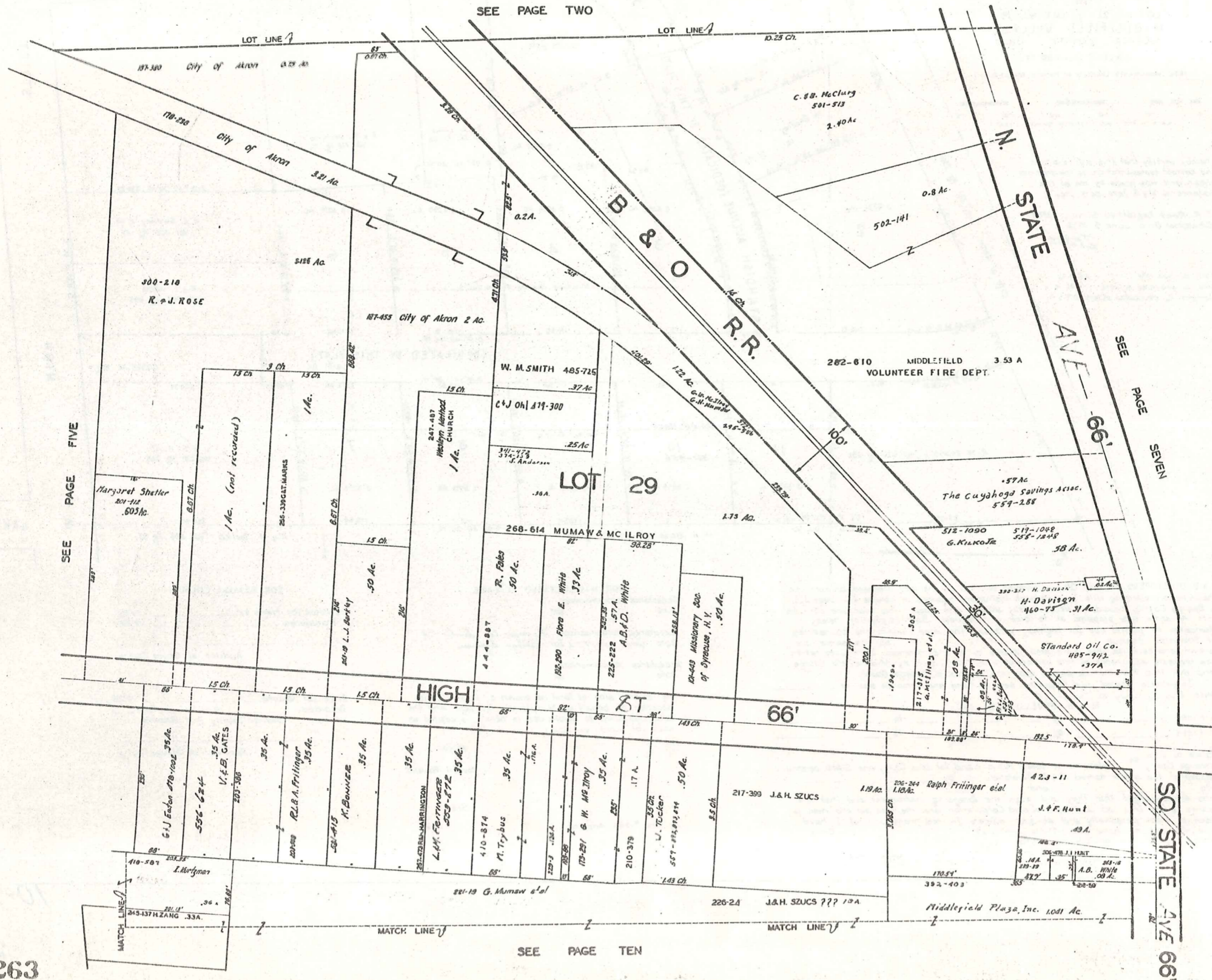
FOR GEAUGA COUNTY
Entered for transfer _____ 1973
Transferred _____ 1973
Auditor of Geauga County _____

Filed for Record _____ 1973
Recorded _____ 1973 Vol _____ Page _____
Gauga County Plat Records

Recorder of Geauga County _____

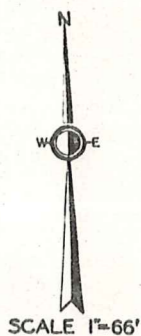
10-5

SEE PAGE TWO



SEE PAGE FIVE

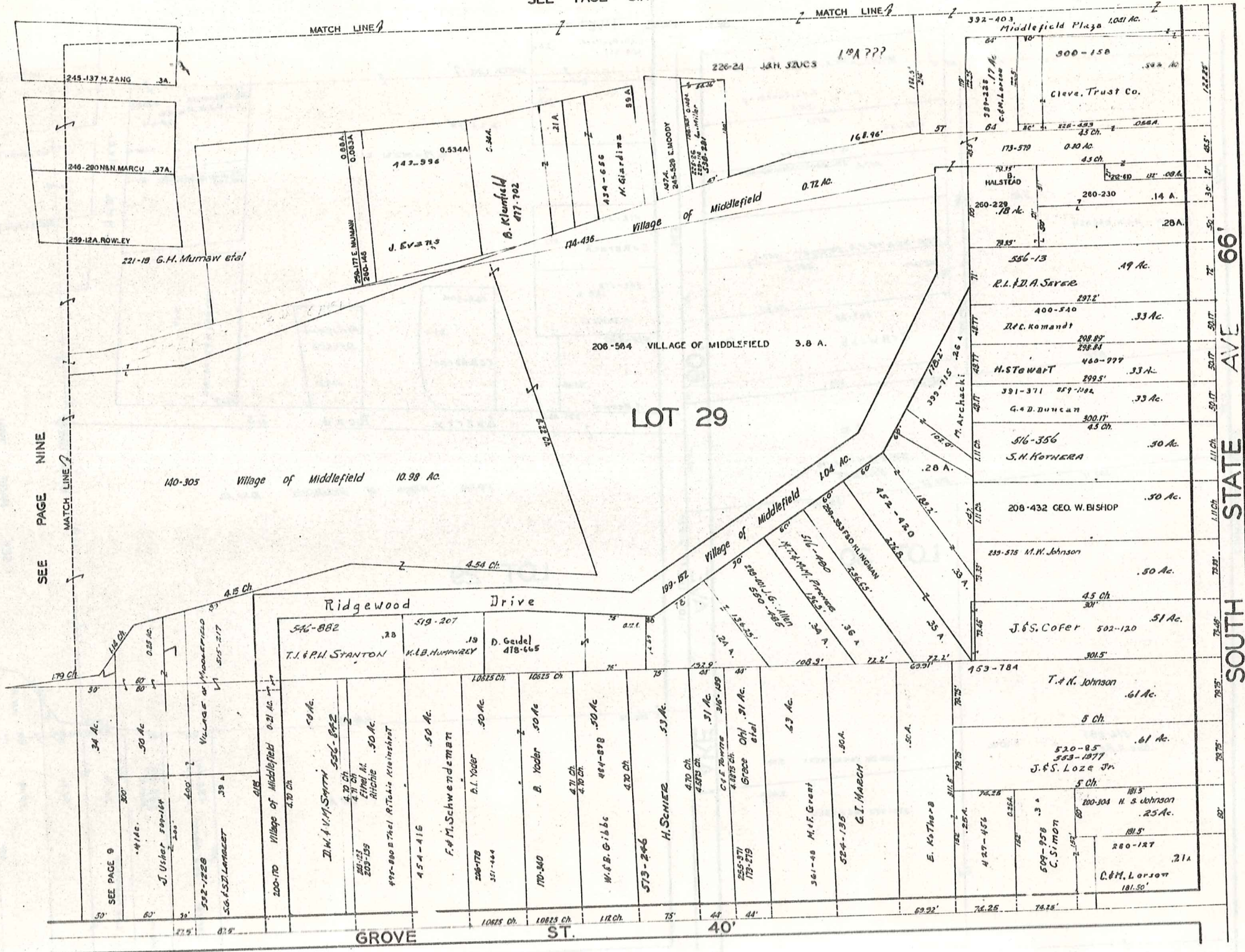
SEE PAGE SEVEN



JAN. 1, 1974

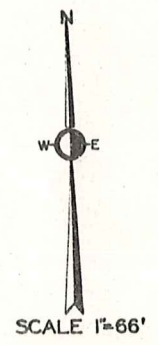
SEE PAGE TEN

SEE PAGE SIX



SEE PAGE NINE

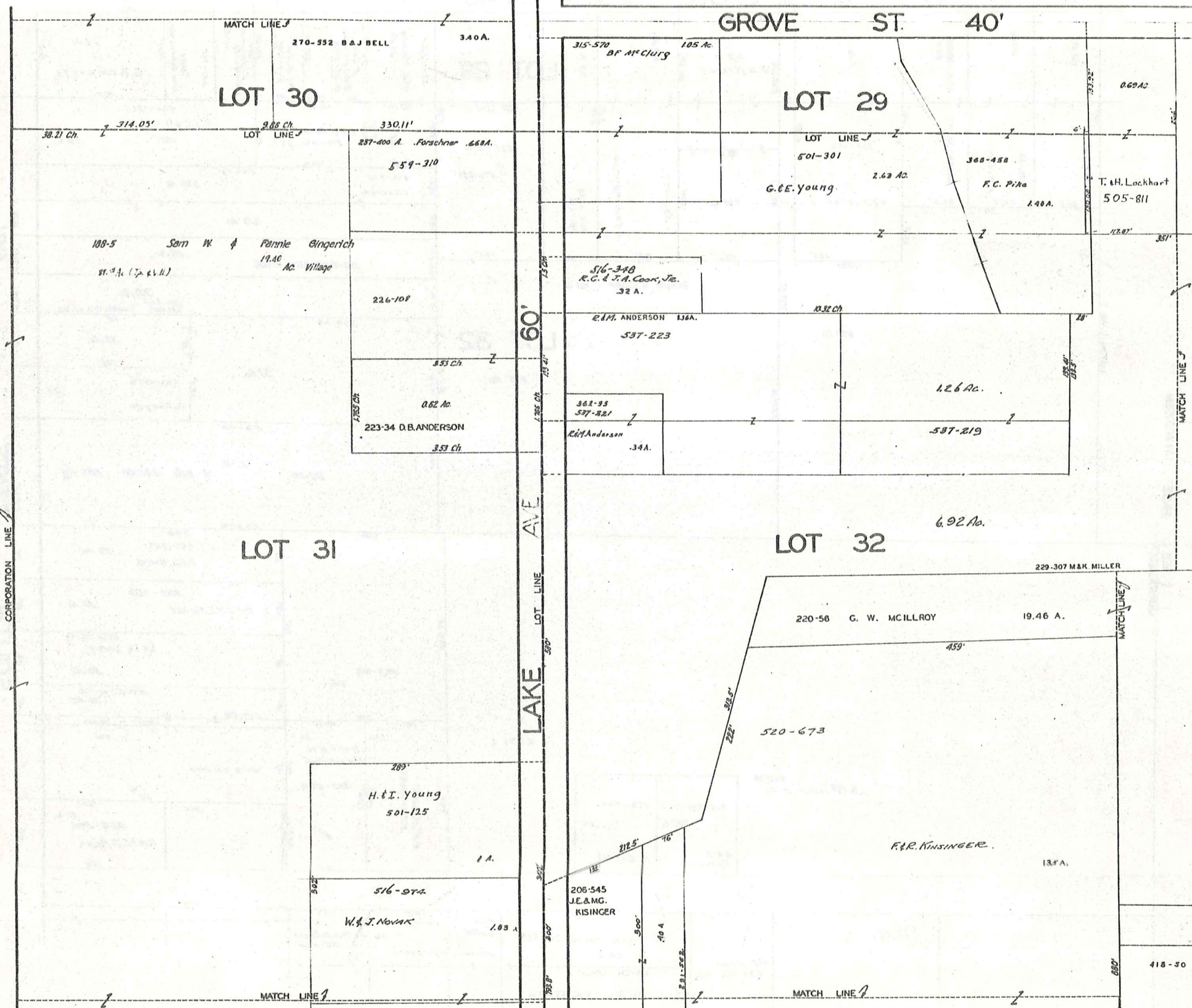
SEE PAGE ELEVEN



JAN. 1, 1974

SEE PAGE FOURTEEN

SEE PAGE NINE



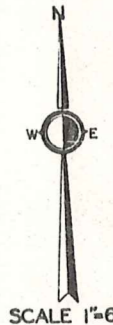
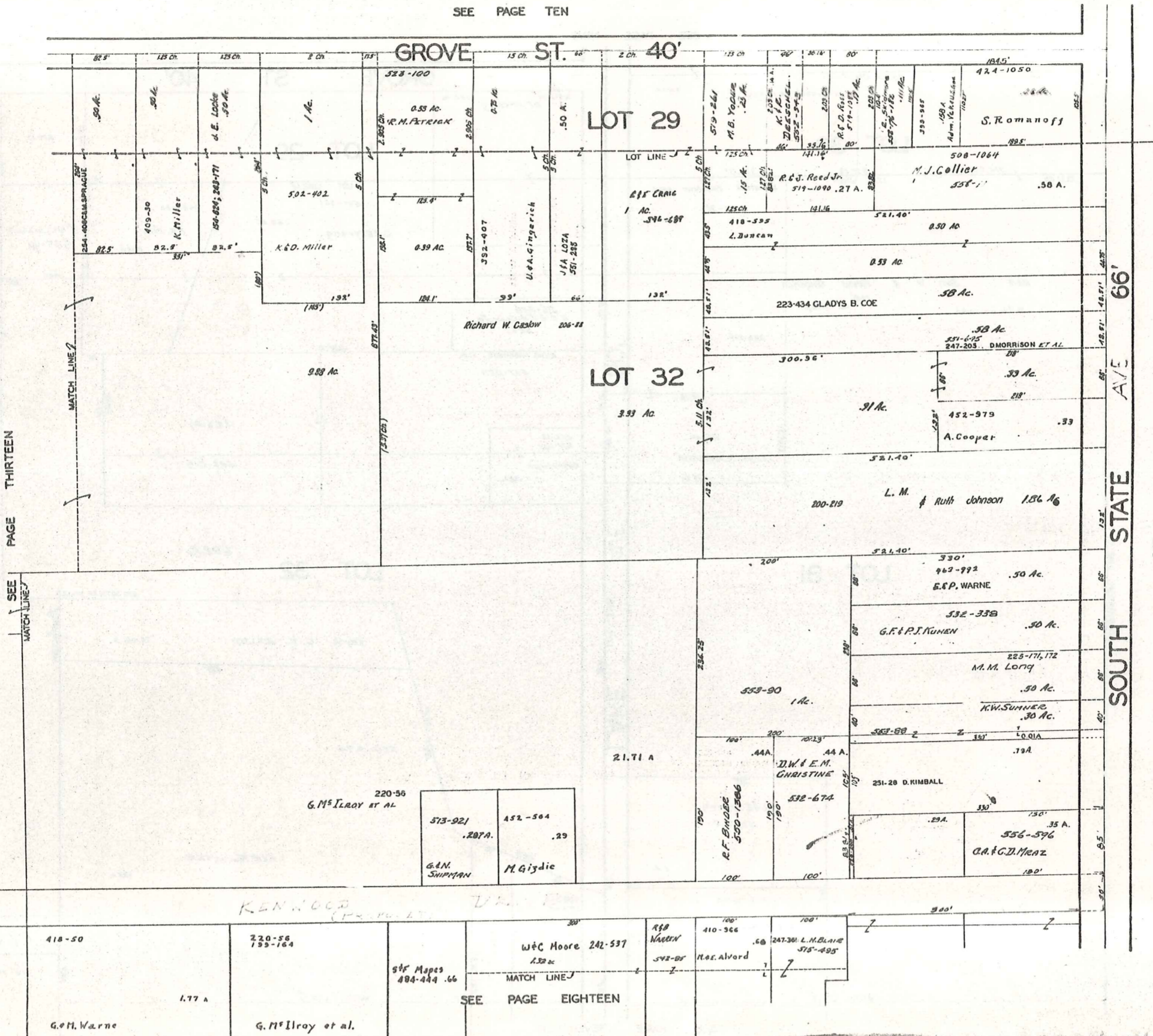
SCALE 1"=66'

JAN 1, 1974

SEE PAGE FOURTEEN

SEE PAGE SEVENTEEN

SEE PAGE TEN



SCALE 1"=66'

JAN 1, 1974

SEE PAGE FIFTEEN

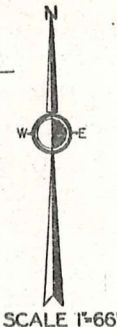
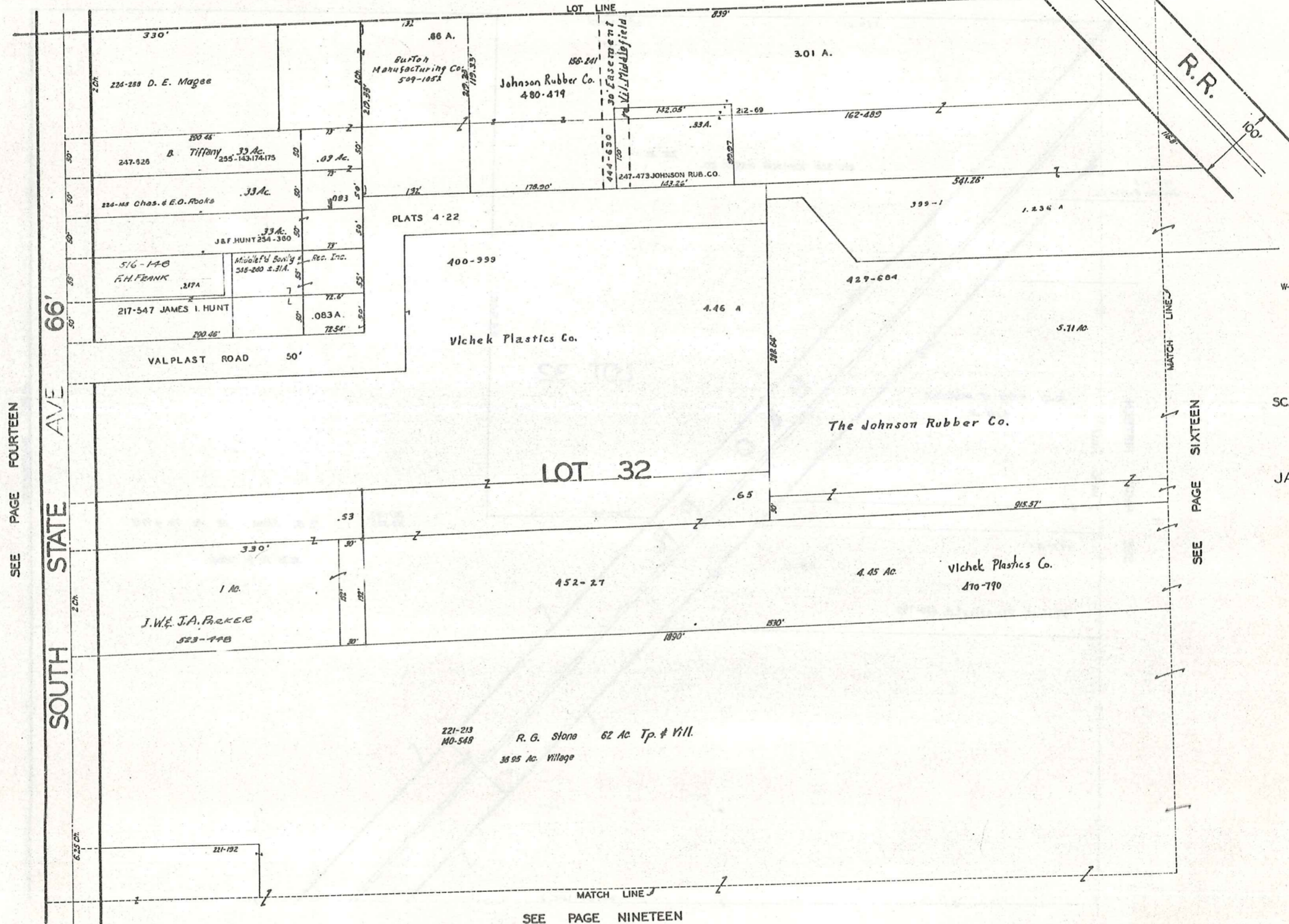
PAGE THIRTEEN

SEE MATCH LINE

271

SEE PAGE EIGHTEEN

SEE PAGE ELEVEN



SCALE 1"=66'

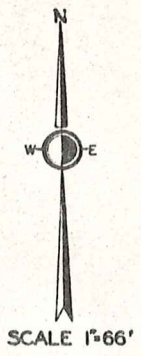
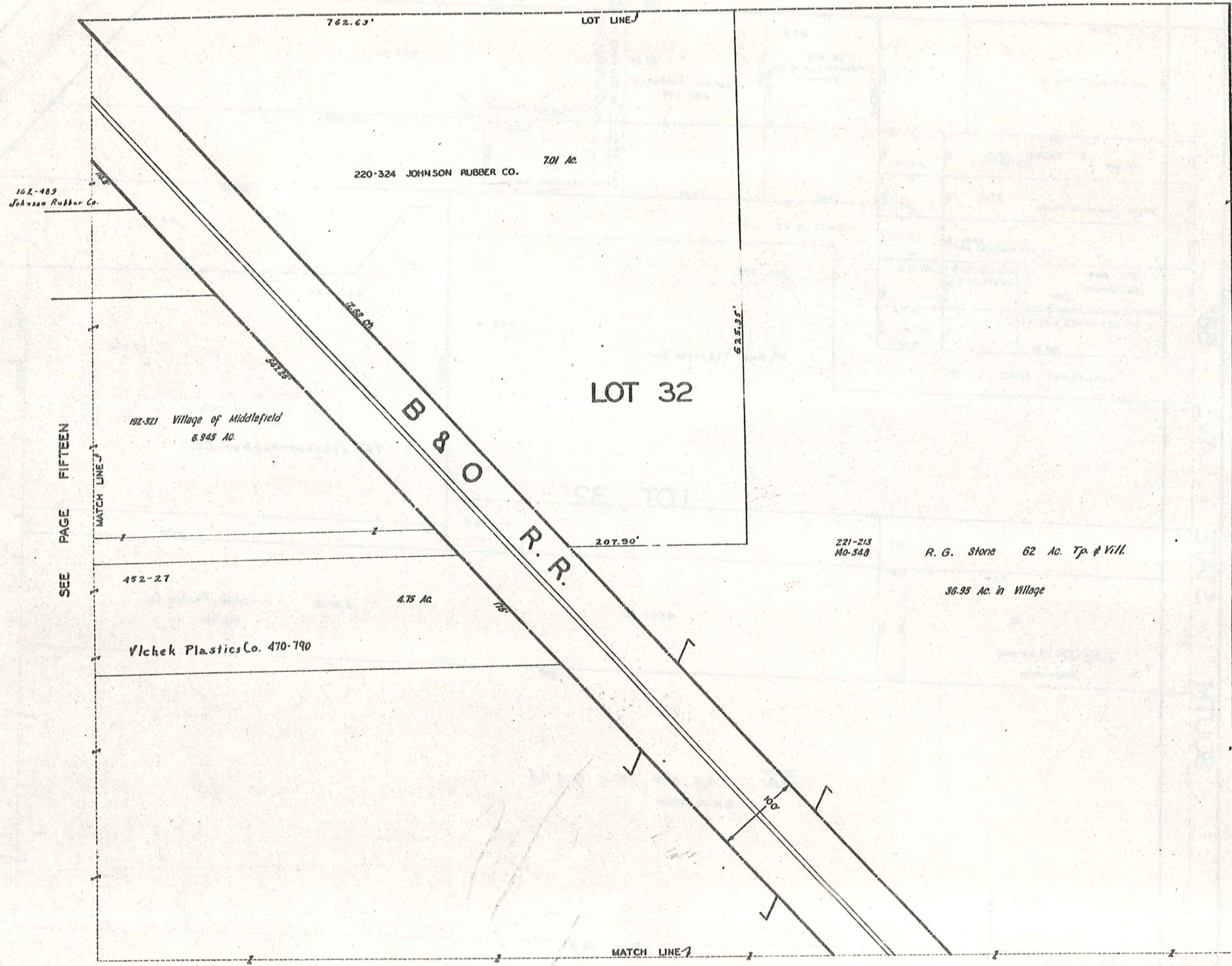
JAN. 1, 1974

SEE PAGE FOURTEEN

SEE PAGE SIXTEEN

SEE PAGE NINETEEN

SEE PAGE TWELVE

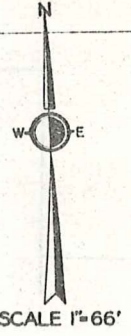
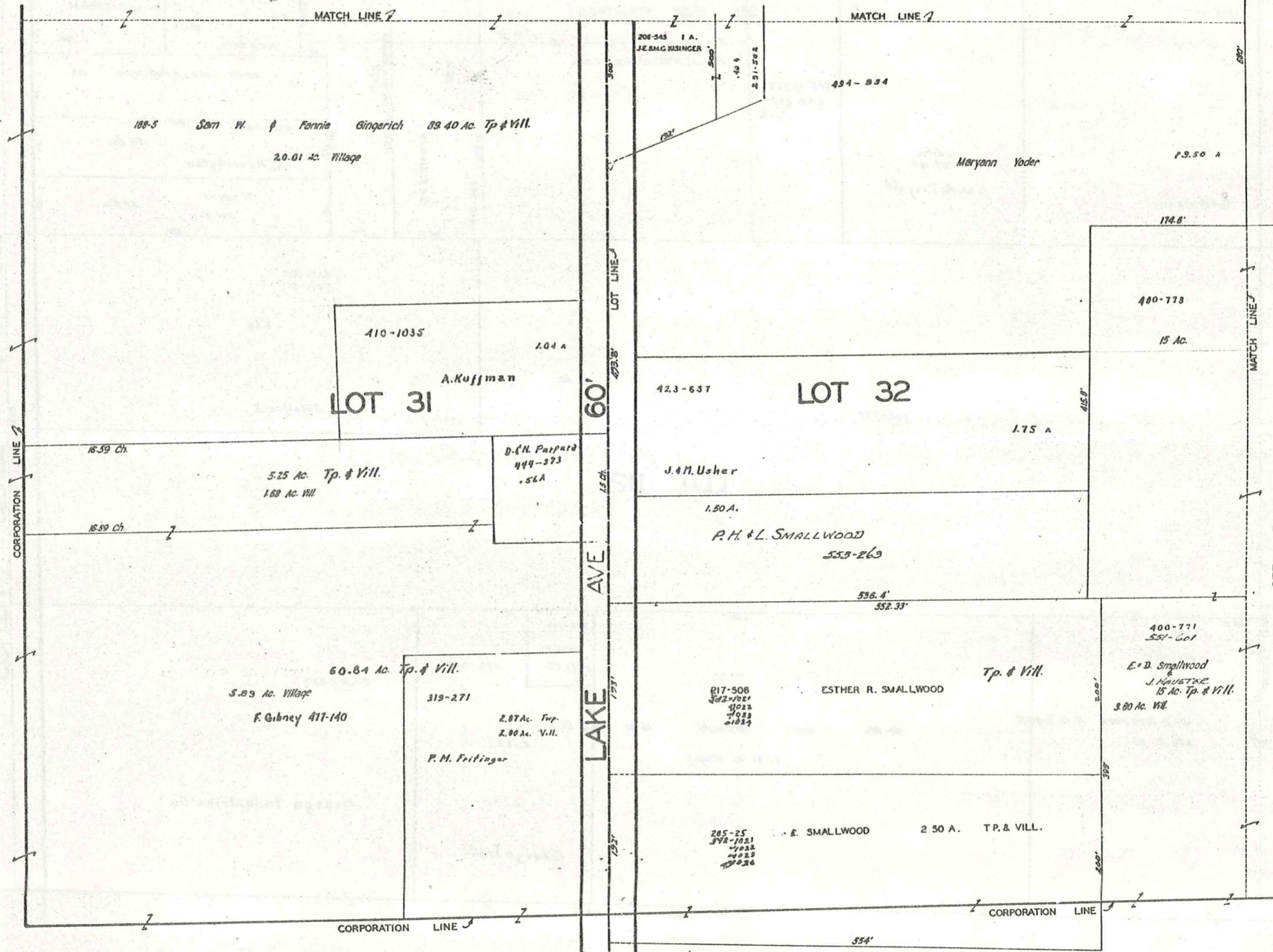


JAN 1, 1974

SEE PAGE TWENTY

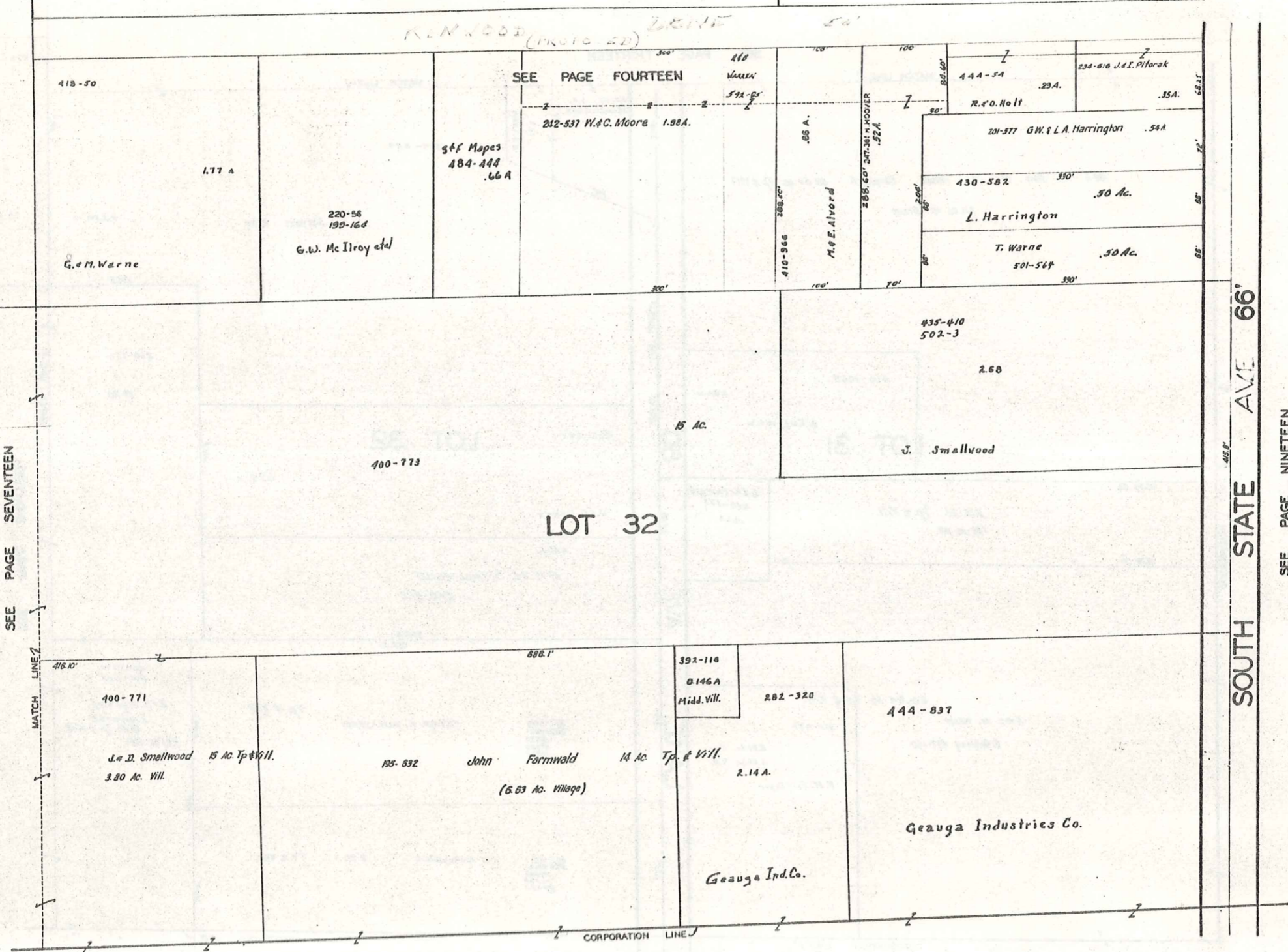
MIDDLEFIELD VILLAGE

SEE PAGE THIRTEEN

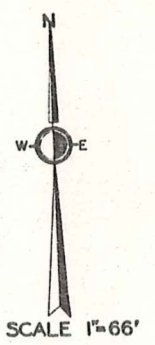


JAN . 1 . , 1974

SEE PAGE EIGHTEEN



SOUTH STATE AVE 66'



SEE PAGE NINETEEN

JAN 1, 1974

SEE PAGE SEVENTEEN

CORPORATION LINE

SEE PAGE SIXTEEN

MATCH LINE 2

221-213
40-548

R. G. Stone
36.95 Ac. in Village.

62 Ac. Tp. 4 Vill.

37.45 Ch.

930.5'

150-458 E. T. Steele Jr. et al.
5.50 Ac. Tp. 4 Vill.
0.45 Ac. in Vill.

B & O R.R.

LOT 32

165 Ac. in Tp.

Federal Improvement Company

486-112 20.906 Ac.

3035'

CORPORATION LINE

CORPORATION LINE

MATCH LINE 1

SEE PAGE NINETEEN

18 AC.

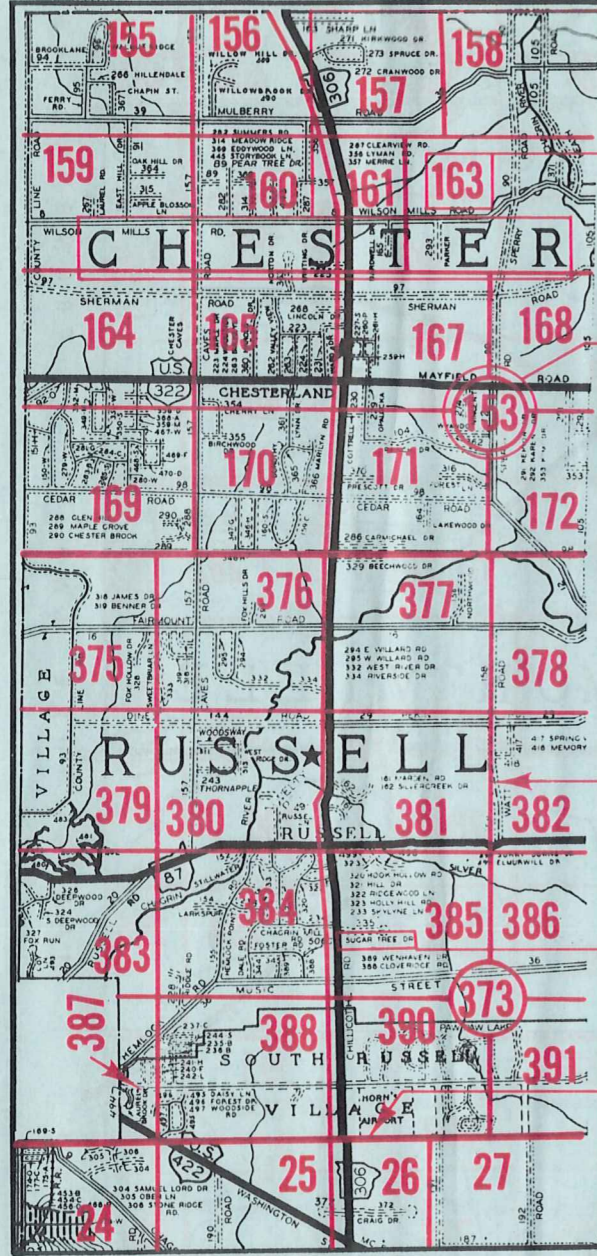
643.5'



JAN . 1 , 1974

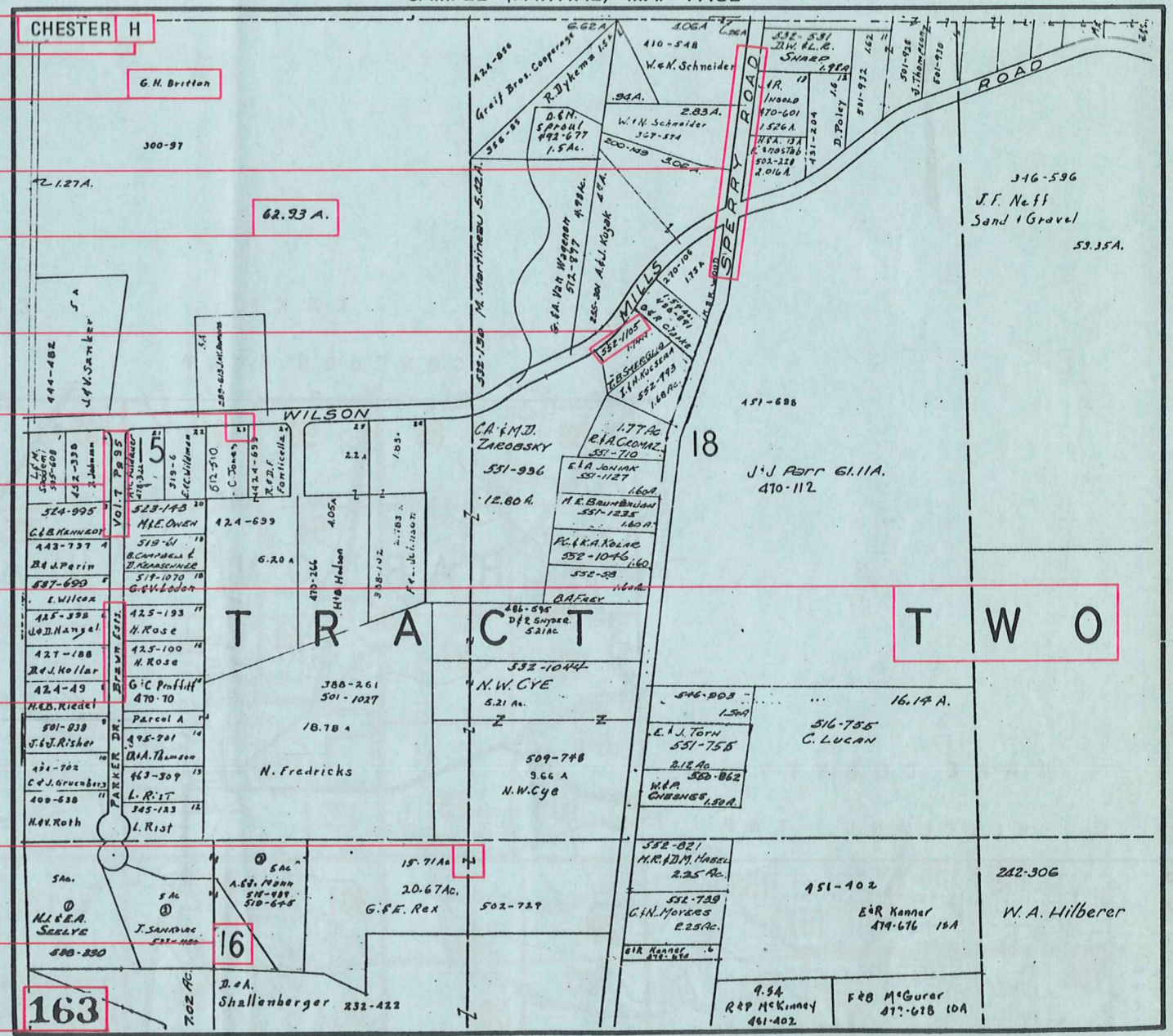
Explanation and Use Sheet for Geauga County, Ohio

SAMPLE (PARTIAL) COUNTY INDEX MAP



- Township Name
- Map Page Number (Or Letter)
- Owners Name
- Street Name
- Acreage
- Municipality Index Beginning Atlas Page Number
- Deed Book & Page
- Subdivision Lot Number
- Plat Book & Page
- Tract Number
- Atlas Page Boundary
- Subdivision Name
- Street Name
- Denotes Continuous Ownership
- Municipality Index Atlas Page Boundary
- Tract Lot Number
- Atlas Page Number

SAMPLE (PARTIAL) MAP PAGE



USE OF THE MAP VOLUME

1. LOCATE THE GENERAL AREA OF INTEREST ON THE COUNTY INDEX MAP, ATLAS PAGE 'B'.
2. A. IF PROPERTY IS IN A TOWNSHIP, NOTE THE ATLAS PAGE NUMBER. TURN TO THE PAGE INDICATED AND LOCATE SPECIFIC PARCEL OF INTEREST.
NOTE: ON SOME MAPS YOU MAY BE REFERRED TO A DETAIL SHEET SHOWING AN ENLARGEMENT OF THE AREA. THESE MAPS ARE FOUND AT THE END OF THE REGULAR MAP PAGES IN EACH TOWNSHIP EITHER IN ALPHABETICAL OR NUMERICAL SEQUENCE.
- B. IF PROPERTY IS IN A MUNICIPALITY, REFER TO THE TABLE OF CONTENTS, ATLAS PAGE 'C', AND NOTE THE BEGINNING ATLAS PAGE NUMBER FOR THE MUNICIPALITY OF INTEREST.
 - (1) TURN TO THE PAGE INDICATED. ON THIS PAGE WILL APPEAR AN INDEX MAP FOR THAT MUNICIPALITY.
 - (2) LOCATE SPECIFIC AREA OF INTEREST AND NOTE THE MAP PAGE NUMBER.
NOTE: DO NOT CONFUSE THE MAP PAGE NUMBER WITH THE ATLAS PAGE NUMBER IN THESE MUNICIPALITIES.
 - (3) FOLLOW EITHER ALPHABETICAL OR NUMERICAL SEQUENCE TO THE MAP PAGE INDICATED AND LOCATE SPECIFIC PARCEL OF INTEREST.